



# JanelleStevens

PROPERTY



## 22 Imagine Drive Strathfieldsaye VIC

4 2 2

Discover this stylish and comfortable home at 22 Imagine Drive, Strathfieldsaye.

This property features four spacious bedrooms, including main bedroom with a walk-through robe and large ensuite, as well as three additional bedrooms with built-in robes. The open-plan living, dining, and kitchen area is ideal for family gatherings. The kitchen is fully equipped with top-quality appliances and huge walk in pantry.

The home also offers a separate lounge room and a versatile study space.

Outside, you'll find a covered outdoor area, perfect for hosting BBQs, family gatherings, or simply unwinding. The

[For full version visit the website](https://www.janellestevens.com.au)

**Type** : House  
**Price** : \$620 per week  
**View** : <https://www.janellestevens.com.au/lease/vic/greater-bendigo-region/strathfieldsaye/residential/house/8178977>

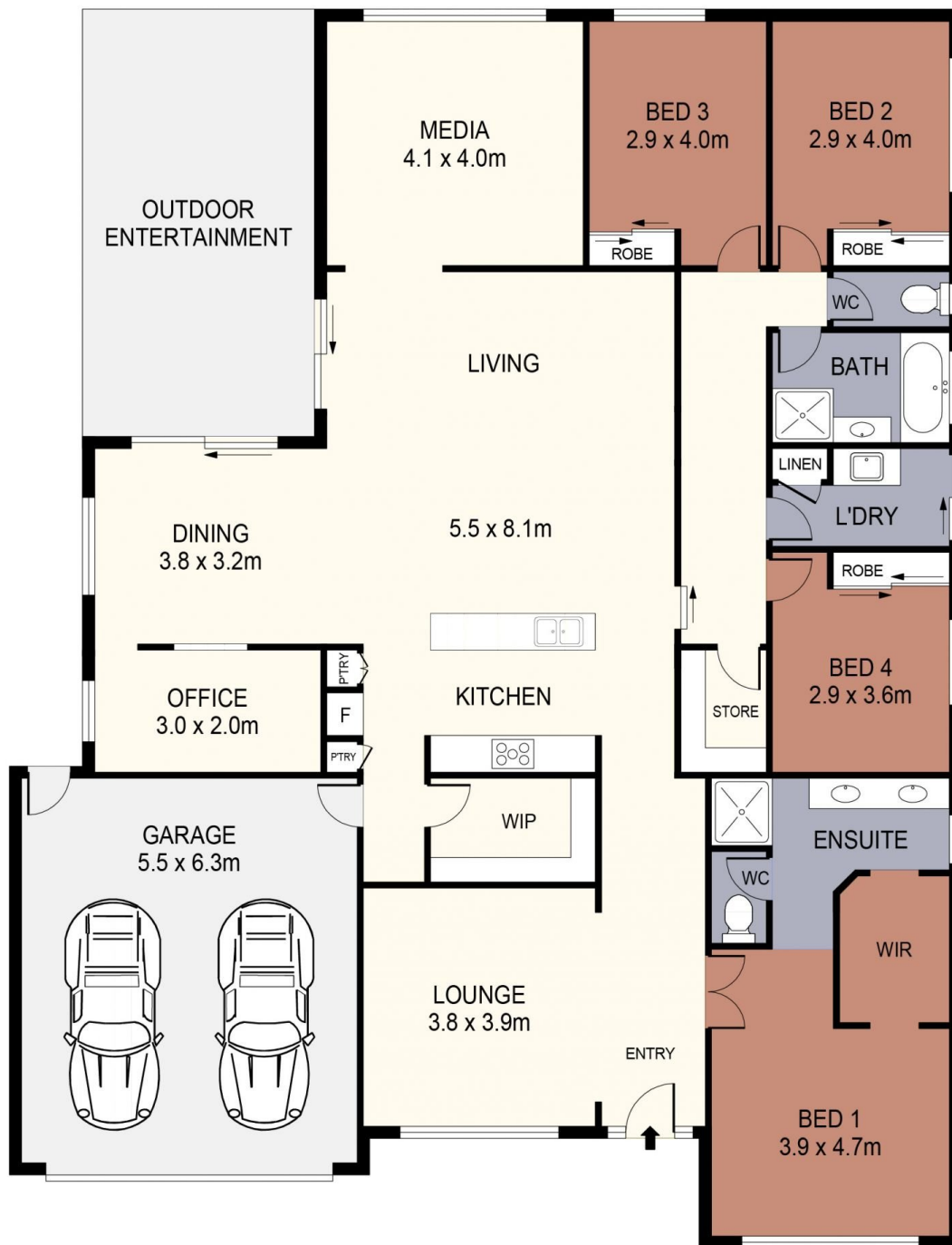


**Jocelyn Heazlewood**  
0417 835 127



**Janelle Stevens**  
0417 835 127

<https://www.janellestevens.com.au>



0 1 2 3 4 5  
SCALE (METRES)

SCALE IN METRES. INDICATIVE ONLY. DIMENSIONS ARE APPROXIMATE. ALL INFORMATION CONTAINED HEREIN IS GATHERED FROM SOURCES WE BELIEVE TO BE RELIABLE. HOWEVER WE CANNOT GUARANTEE ITS ACCURACY AND INTERESTED PARTIES SHOULD RELY ON THEIR OWN ENQUIRIES. Ref. No: 240821

INT : 229m<sup>2</sup>  
GARAGE : 35m<sup>2</sup>  
OUTDOOR ENTERTAINMENT : 26m<sup>2</sup>

22 IMAGINE DRIVE

STRATHFIELD SAYE