



### 3 Isabella Grove Strathdale VIC

2 1 2

Security, privacy and location are just a few of the standout features of this Strathdale townhouse.

The home is ideally nestled in a quiet street close to a local cafe, public transport and the picturesque walking paths of Kennington Reservoir and Strathdale Community Park. This ideal setting means you could enjoy an early morning stroll around the lake or a coffee before hopping on the bus to town.

The spacious townhouse offers two bedrooms, two-way bathroom, separate laundry, light-filled living room, dining area adjoining the kitchen, plus a covered alfresco deck for outdoor living.

**Type** : House  
**Price** : \$530,000 - \$560,000  
**Land Size** : 329 sqm  
**View** : <https://www.janellestevens.com.au/sale/vic/greater-bendigo-region/strathdale/residential/house/8178813>

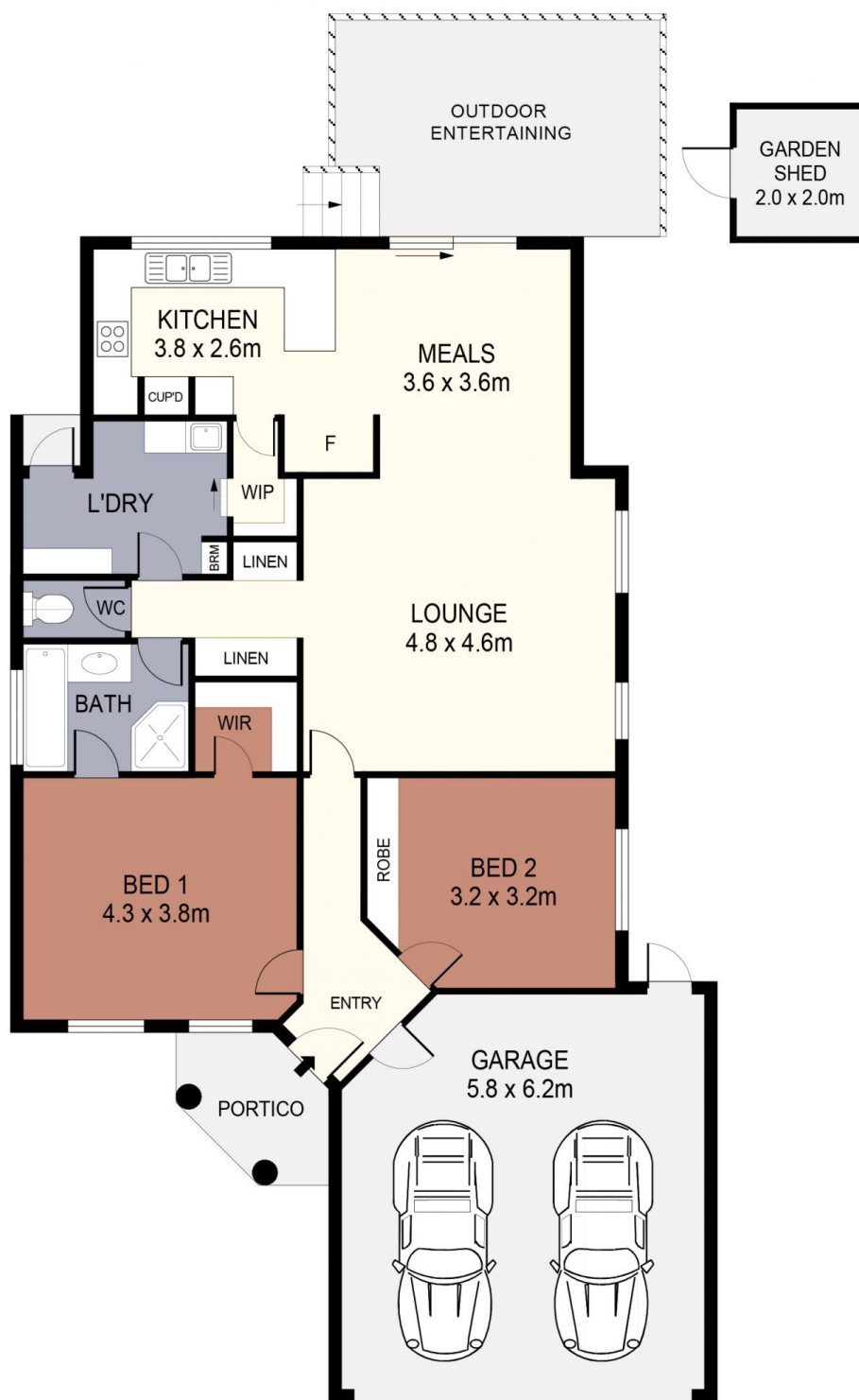


**Mitch Kenny**  
0417 835 127



**Janelle Stevens**  
0417 835 127

[For full version visit the website](https://www.janellestevens.com.au)



SCALE IN METRES. INDICATIVE ONLY. DIMENSIONS ARE APPROXIMATE. ALL INFORMATION CONTAINED HEREIN IS GATHERED FROM SOURCES WE BELIEVE TO BE RELIABLE. HOWEVER WE CANNOT GUARANTEE ITS ACCURACY AND INTERESTED PARTIES SHOULD RELY ON THEIR OWN ENQUIRIES.  
Ref. No: 241029

INT	:	114m <sup>2</sup>
DECK	:	16m <sup>2</sup>
GARAGE	:	34m <sup>2</sup>
PORTICO	:	5m <sup>2</sup>
GARDEN SHED	:	4m <sup>2</sup>

3 ISABELLA GROVE