



## 52 Keogh Drive Spring Gully VIC

5 🛏 2 🚿 3 🚗

Inspection of this property is by appointment only. Please call Mitch on 0400601779 to arrange an inspection.

This breathtaking dual-level residence boasts a striking contemporary facade and a sophisticated interior, making it the ultimate haven for families and entertainers.

Thoughtfully designed with meticulous attention to detail, the home features soaring ceilings, square-set cornices, polished concrete, blonde hardwood, and plush carpeted floors that exude elegance and comfort. The adaptable ground floor layout encompasses a generous living area and an oversized bedroom with ample storage. An external side door provides further versatility, allowing for use as a home office, guest suite, teen retreat or media room.

[For full version visit the website](https://www.janellestevens.com.au)

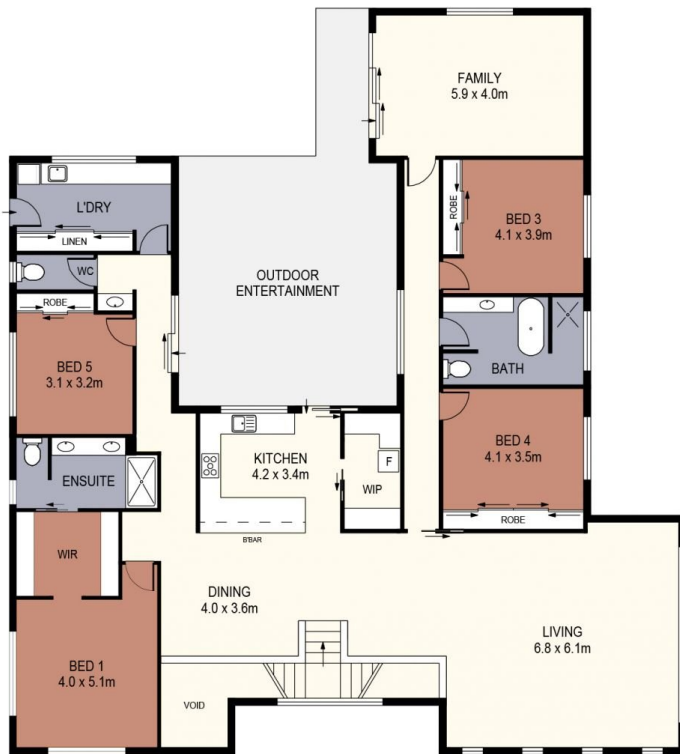
**Type** : House  
**Price** : \$1,450,000 - \$1,550,000  
**Land Size** : 1866 sqm  
**View** : <https://www.janellestevens.com.au/sale/vic/greater-bendigo-region/spring-gully/residential/house/8171343>



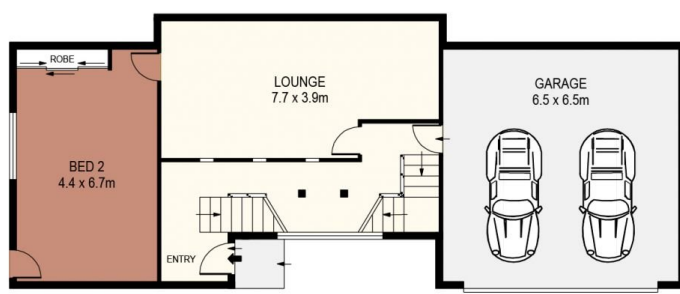
**Mitch Kenny**  
0417 835 127



**Janelle Stevens**  
0417 835 127



FIRST FLOOR



GROUND FLOOR



SITE PLAN  
(NOT TO SCALE)



SCALE (METRES)

SCALE IN METRES, INDICATIVE ONLY. DIMENSIONS ARE APPROXIMATE. ALL INFORMATION CONTAINED HEREIN IS GATHERED FROM SOURCES WE BELIEVE TO BE RELIABLE. HOWEVER WE CANNOT GUARANTEE ITS ACCURACY AND INTERESTED PARTIES SHOULD RELY ON THEIR OWN ENQUIRIES.  
Ref. No: 241017T

INT	:	369m <sup>2</sup>
GARAGE	:	42m <sup>2</sup>
VERANDAH	:	30m <sup>2</sup>
ENTERTAINING AREA	:	42m <sup>2</sup>
WORKSHOP/STORAGE	:	28m <sup>2</sup>
OUTDOOR ENTERTAINMENT	:	50m <sup>2</sup>

52 KEOGH DRIVE

SPRING GULLY