

7 Black Wattle Avenue Epsom VIC

3 2 2

This move-in-ready three-bedroom home is ideally placed to take advantage of everything the Acacia Park Estate and Epsom have to offer.

Laid out with two separate living zones, the home features a lounge at the front and a central open-plan kitchen, dining and living space. Equipped with gas cooktop, electric oven, dishwasher and double sink, the kitchen is ready for anything the most discerning cook could throw at it.

The master bedroom is completed by a three-piece ensuite and walk-in robe while the remaining two bedrooms are tucked off the rear hall and serviced by the family bathroom.

Type : House
Price : \$ 500,000
Land Size : 437 sqm
View : <https://www.janellestevens.com.au/sale/vic/greater-bendigo-region/epsom/residential/house/8103591>

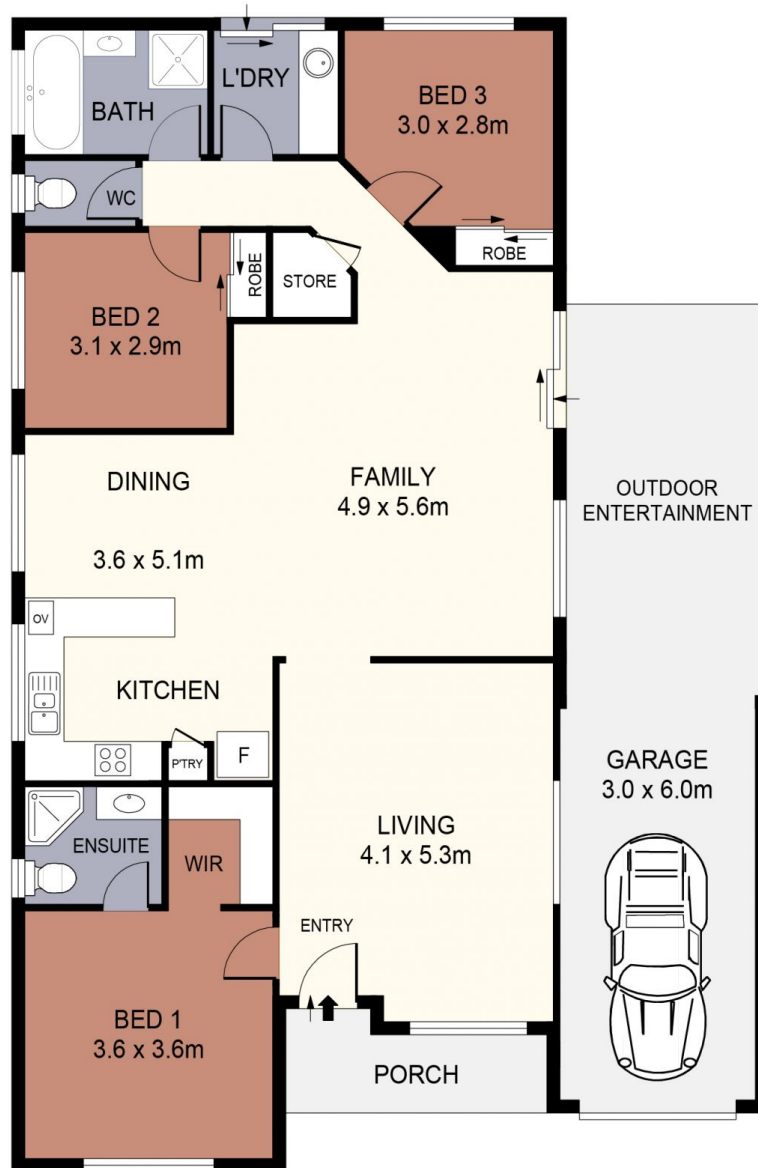
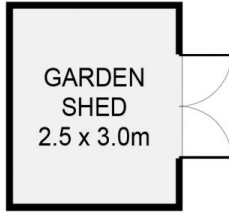


Mitch Kenny
0417 835 127



Janelle Stevens
0417 835 127

[For full version visit the website](https://www.janellestevens.com.au)



SCALE IN METRES. INDICATIVE ONLY. DIMENSIONS ARE APPROXIMATE. ALL INFORMATION CONTAINED HEREIN IS GATHERED FROM SOURCES WE BELIEVE TO BE RELIABLE. HOWEVER WE CANNOT GUARANTEE ITS ACCURACY AND INTERESTED PARTIES SHOULD RELY ON THEIR OWN ENQUIRIES.
Ref. No: 240725

	➤
INT	: 143m ²
PORCH	: 5m ²
GARAGE	: 18m ²
GARDEN SHED	: 8m ²
OUTDOOR ENTERTAINMENT	: 18m ²

7 BLACK WATTLE AVENUE