



## 92 Mistletoe Street Golden Square VIC

2 1 1

Placed at the end of a quiet no through road, this 2 bedroom gem sits on a low maintenance block of 447m<sup>2</sup> (approx.).

The open plan kitchen, dining and living space is centrally located creating a space that feeds off to the rest of the home. The kitchen is equipped with gas range, oversized pantry and breakfast bar and flows to the rear yard and alfresco area.

Each of the two bedrooms are generously proportioned with the master having a walk-in robe and the second its own built-in robe.

The two way, three piece bathroom features corner

[For full version visit the website](https://www.janellestevens.com.au/sale/vic/greater-bendigo-region/golden-square/residential/house/8085179)

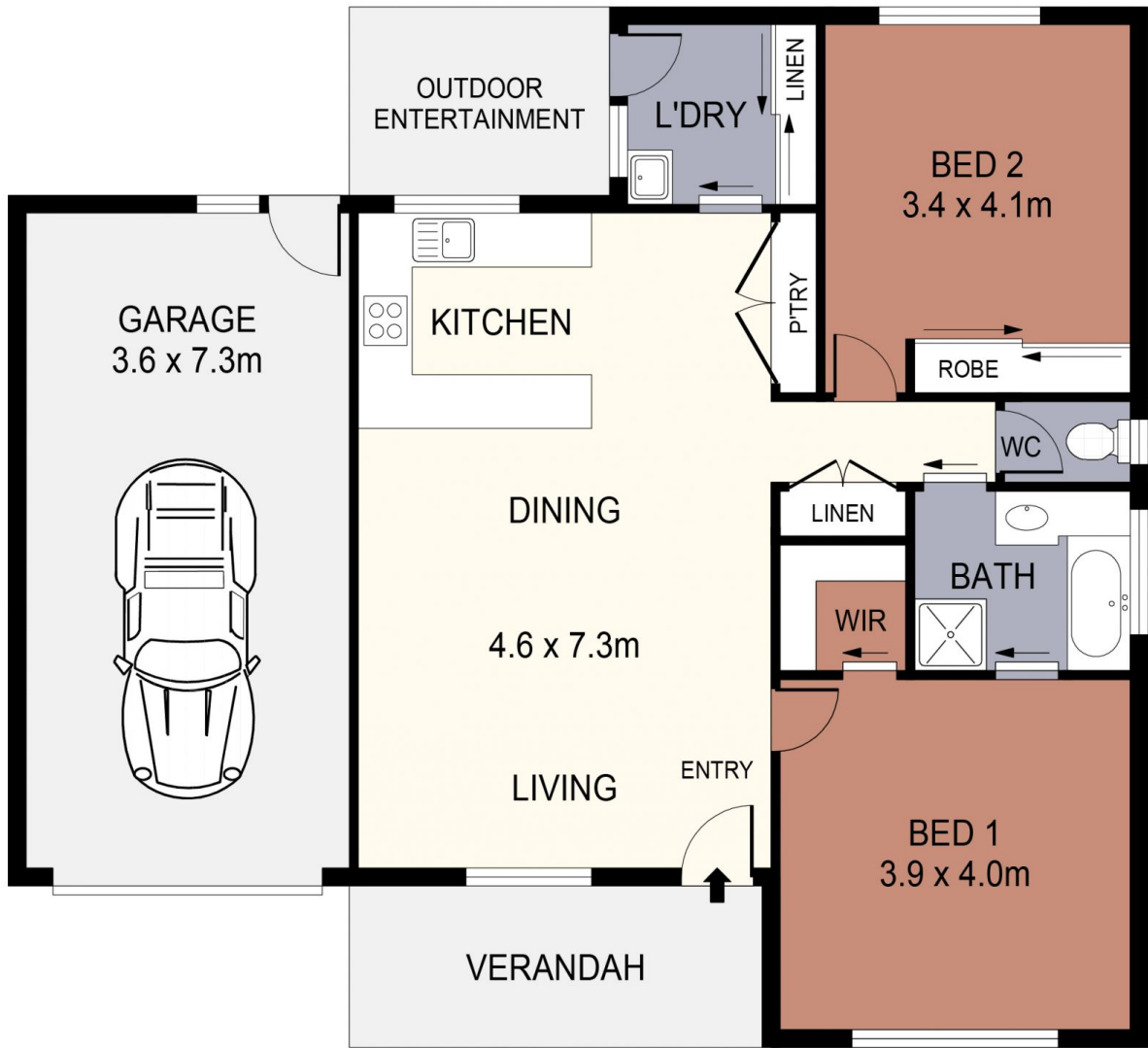
**Type** : House  
**Land Size** : 430 sqm  
**View** : <https://www.janellestevens.com.au/sale/vic/greater-bendigo-region/golden-square/residential/house/8085179>



**Mitch Kenny**  
0417 835 127



**Janelle Stevens**  
0417 835 127



SCALE (METRES)

SCALE IN METRES. INDICATIVE ONLY. DIMENSIONS ARE APPROXIMATE. ALL INFORMATION CONTAINED HEREIN IS GATHERED FROM SOURCES WE BELIEVE TO BE RELIABLE. HOWEVER WE CANNOT GUARANTEE ITS ACCURACY AND INTERESTED PARTIES SHOULD RELY ON THEIR OWN ENQUIRIES.  
Ref. No. 240626

INT	:	90m <sup>2</sup>
GARAGE	:	26m <sup>2</sup>
VERANDAH	:	8m <sup>2</sup>
OUTDOOR ENTERTAINMENT	:	6m <sup>2</sup>

92 MISTLETOE STREET

GOLDEN SQUARE