



8 Elm Street Eaglehawk VIC

4 1 3

A comprehensive internal renovation has transformed this 80s brick veneer into a modern marvel suitable for today's modern family, retirees or investors.

Set on an oversized elevated lot approx. 929m² in a peaceful street, it enjoys proximity to the Eaglehawk North Primary School, public transport and the serene bushwalking and cycling tracks of the Whipstick Forest.

The top-to-toe refresh includes a new open-style kitchen, dining and living zone, remodelled laundry, bathroom and four robed bedrooms.

Picture windows in the living and dining fill the room with natural light while overlooking the enclosed front garden

[For full version visit the website](https://www.janellestevens.com.au/sale/vic/greater-bendigo-region/eaglehawk/residential/house/8048510)

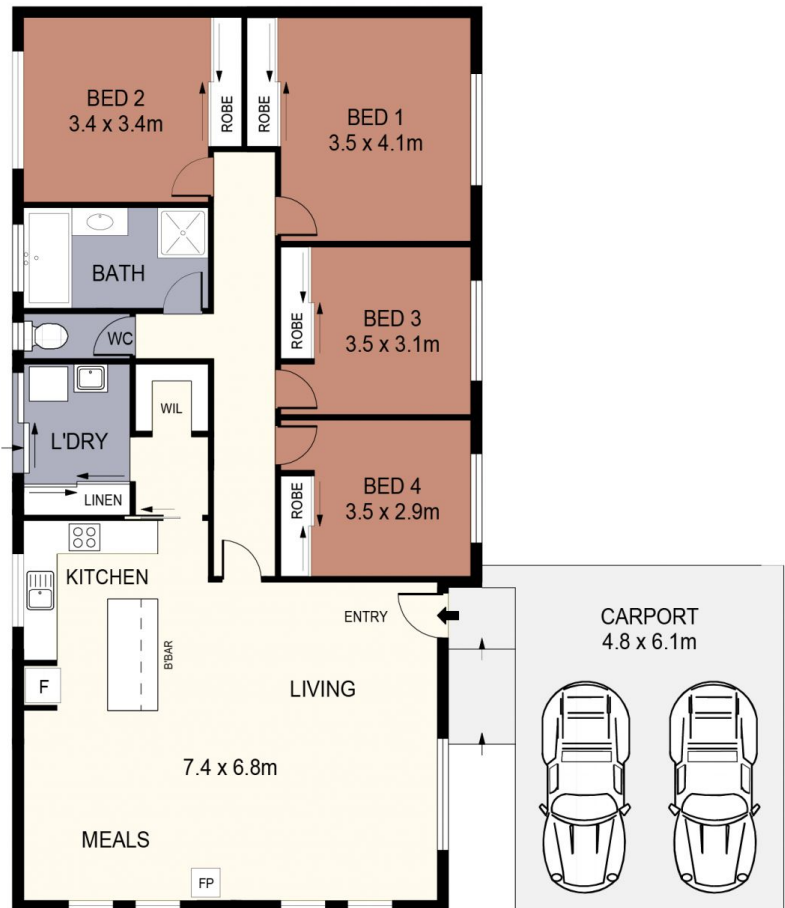
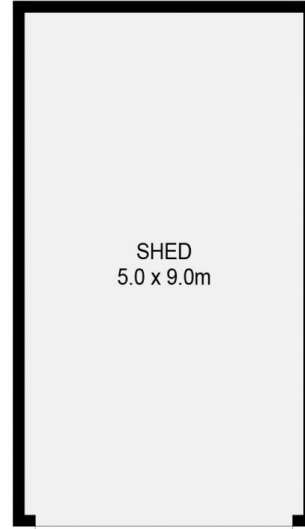
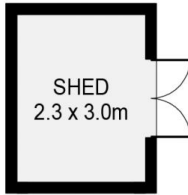
Type : House
Price : \$ 570,000
Land Size : 929 sqm
View : <https://www.janellestevens.com.au/sale/vic/greater-bendigo-region/eaglehawk/residential/house/8048510>



Mitch Kenny
0417 835 127



Janelle Stevens
0417 835 127



SCALE (METRES)

SCALE IN METRES. INDICATIVE ONLY. DIMENSIONS ARE APPROXIMATE. ALL INFORMATION CONTAINED HEREIN IS GATHERED FROM SOURCES WE BELIEVE TO BE RELIABLE. HOWEVER WE CANNOT GUARANTEE ITS ACCURACY AND INTERESTED PARTIES SHOULD RELY ON THEIR OWN ENQUIRIES.
Ref. No: 240618



INT : 135m²
 SHED : 45m²
 CARPORT : 29m²

8 ELM STREET

EAGLEHAWK