

11 Michelle Drive Maiden Gully VIC

3 1 8

This charming brick homestead-style home on approx. 1.27 acres (5331 sq m) of land offers a serene retreat close to all life essentials.

Surrounded by extensive landscaped grounds with natural rock retaining walls, native plantings, and various stone and citrus fruit trees, the property provides a sense of privacy and tranquillity.

It's a well-maintained property and will suit families or couples looking for a place to relax with plenty of storage for their belongings and space for grandchildren/guests to visit.

The home features a full-length bull-nosed front verandah,

[For full version visit the website](https://www.janellestevens.com.au)

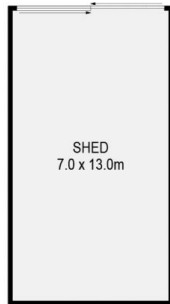
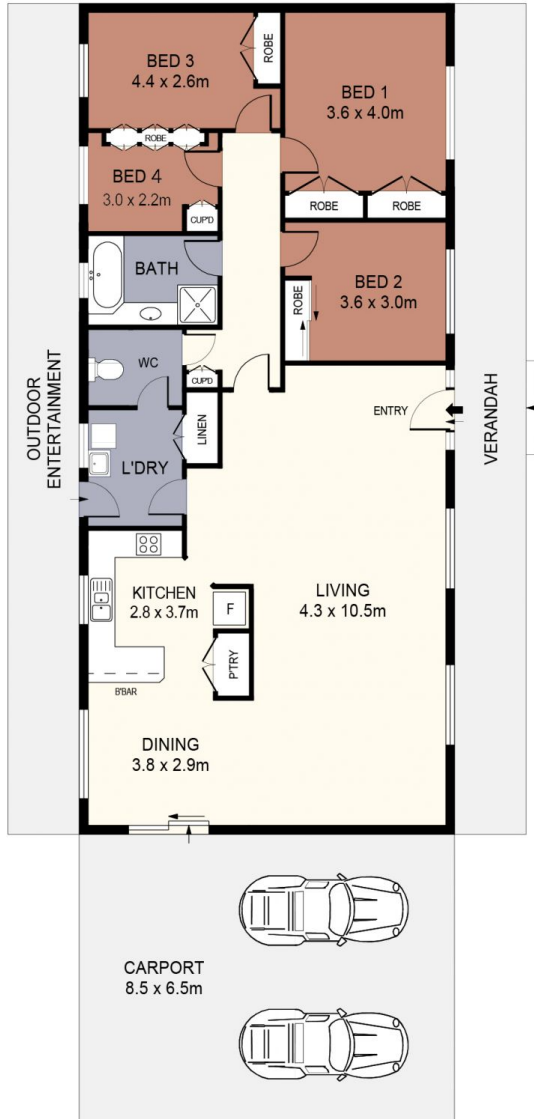
Type : House
Price : \$ 860,000
Land Size : 5331 sqm
View : <https://www.janellestevens.com.au/sale/vic/greater-bendigo-region/maiden-gully/residential/house/8035693>



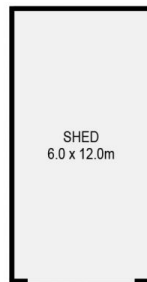
Janelle Stevens
0417 835 127



Mitch Kenny
0417 835 127



SHED
(NOT TO SCALE)



SHED
(NOT TO SCALE)



SCALE (METRES)

SCALE IN METRES. INDICATIVE ONLY. DIMENSIONS ARE APPROXIMATE. ALL INFORMATION CONTAINED HEREIN IS GATHERED FROM SOURCES WE BELIEVE TO BE RELIABLE. HOWEVER WE CANNOT GUARANTEE IT'S ACCURACY AND INTERESTED PARTIES SHOULD RELY ON THEIR OWN ENQUIRIES.
Ref. No: 240530

INT	:	160m ²
SHED	:	163m ²
CARPORT	:	55m ²
VERANDAH	:	30m ²
OUTDOOR ENTERTAINMENT	:	30m ²

11 MICHELLE DRIVE