



## 1 Bolt Street Long Gully VIC

3 1 1

The neat weatherboard home has been well-loved, well maintained and updated without destroying its vintage vibe.

The spacious lounge features gas heater heating while the adjoining kitchen/ meals include ample bench space/cabinetry, dishwasher and a gas upright cooker. The home also includes the added comfort of ducted heating and cooling throughout.

Sleeping accommodation consists of three bedrooms (two with built-in robes) central bathroom and a separate laundry.

The back yard is private and secure with a covered alfresco area including built-in barbecue, sink and wood-burning

[For full version visit the website](https://www.janellestevens.com.au/lease/vic/greater-bendigo-region/long-gully/residential/house/7950898)

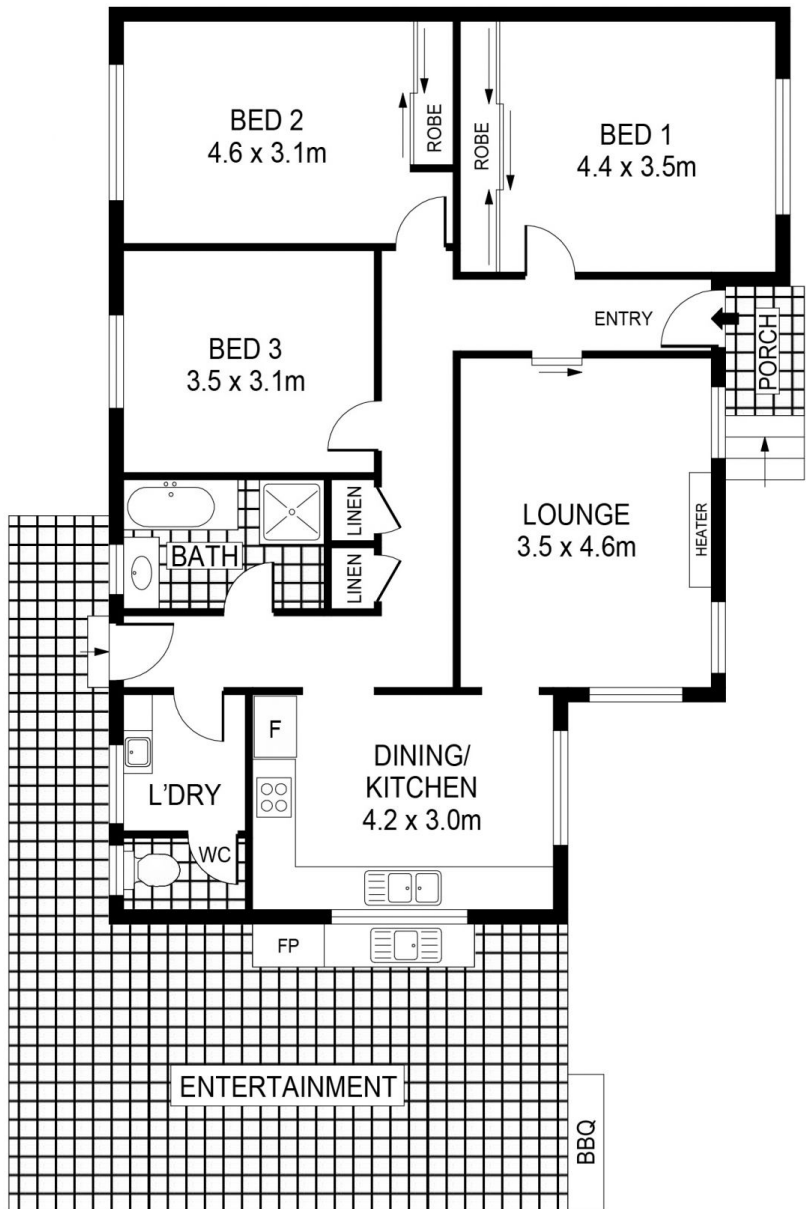
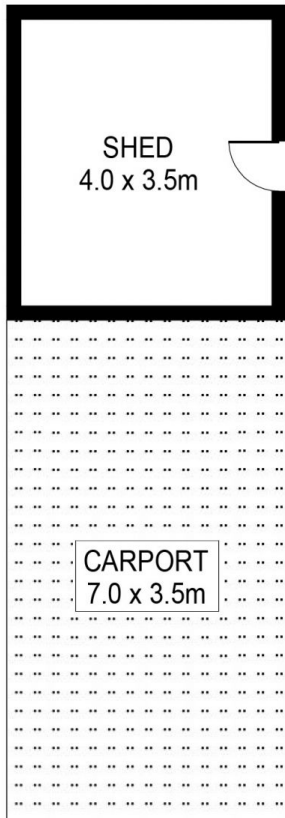
**Type** : House  
**Land Size** : 477 sqm  
**View** : <https://www.janellestevens.com.au/lease/vic/greater-bendigo-region/long-gully/residential/house/7950898>



**Jocelyn Heazlewood**  
0417 835 127



**Janelle Stevens**  
0417 835 127



PLANS SHOWN ONLY INDICATIVE OF LAYOUT. DIMENSIONS ARE APPROXIMATE.  
Ref. No: 00000



INT : 108m<sup>2</sup>  
SHED : 14m<sup>2</sup>

1 BOLT STREET

LONG GULLY